

WORKSHOP SOLO HOUSES • SEPT. 2019



Università  
della  
Svizzera  
italiana

Accademia  
di  
architettura

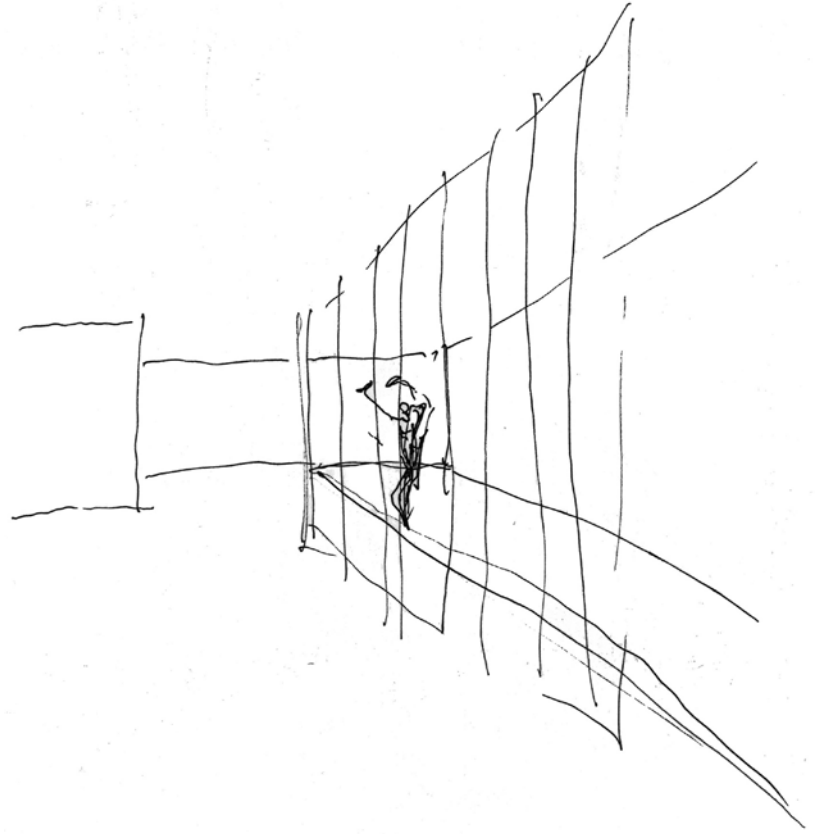
WORKSHOP

SOLO HOUSES « Pezo von Ellrichshausen – Office KGDVS »

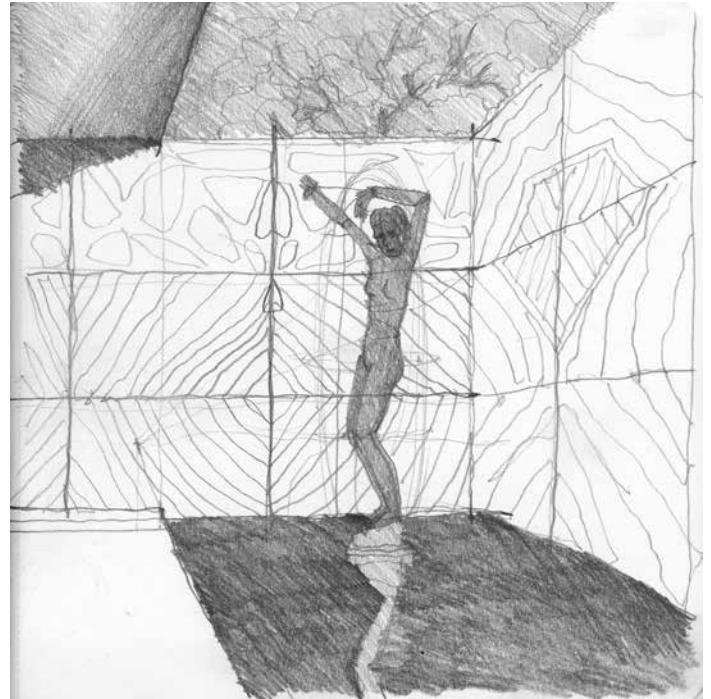
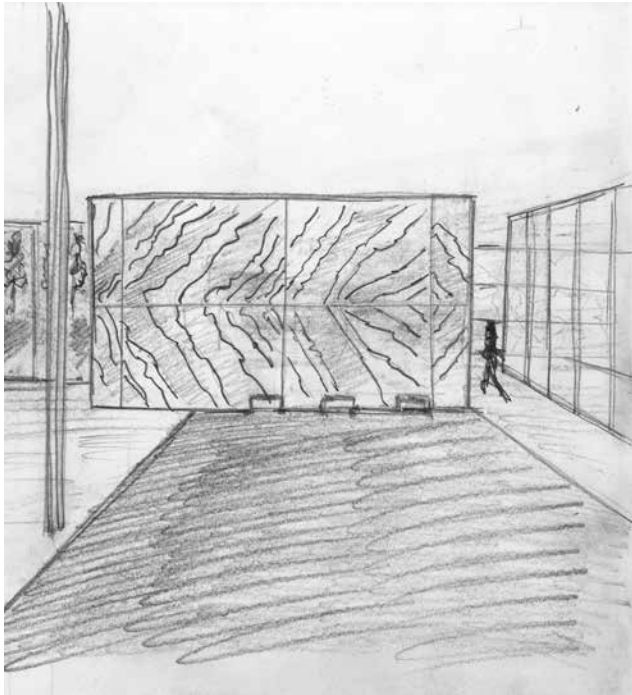
Accademia di architettura – Università della Svizzera italiana (Swiss)  
Faculté Architecture – Université de Liège (Belgium)

September 7 - 11, 2019





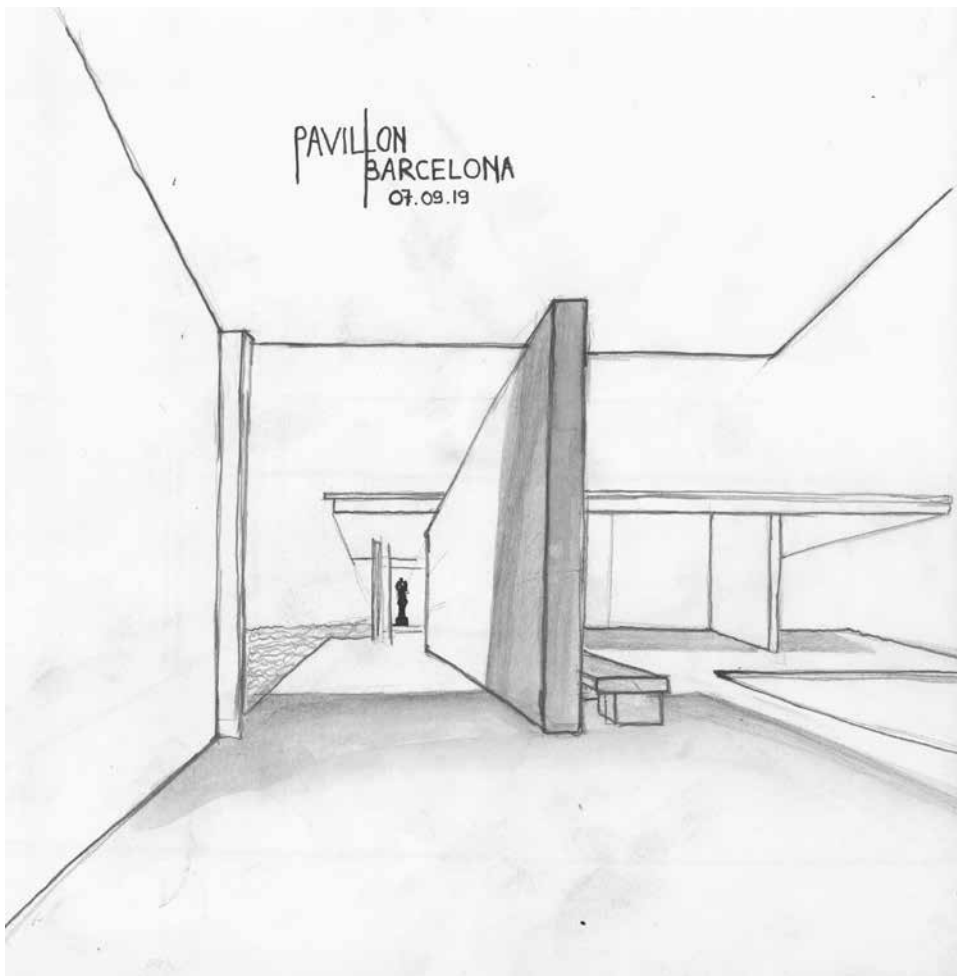




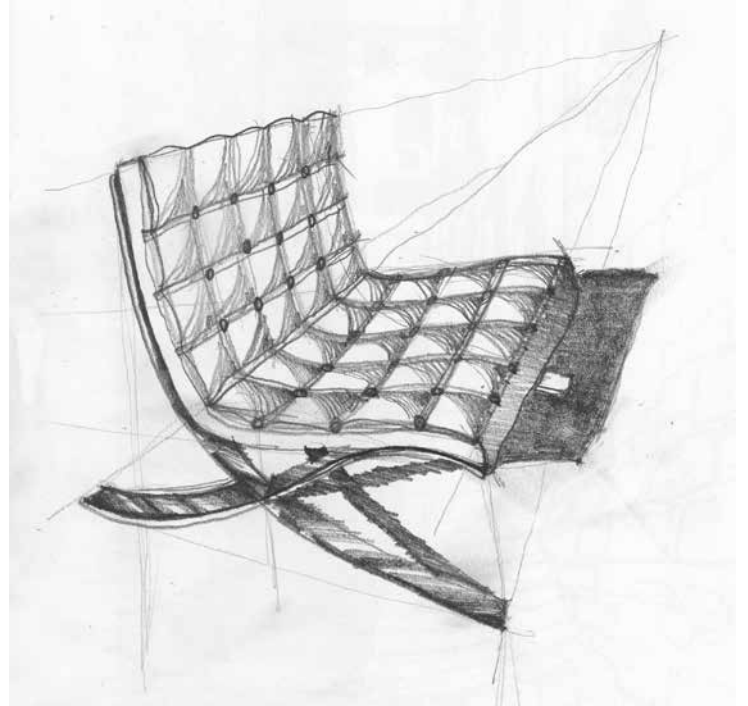
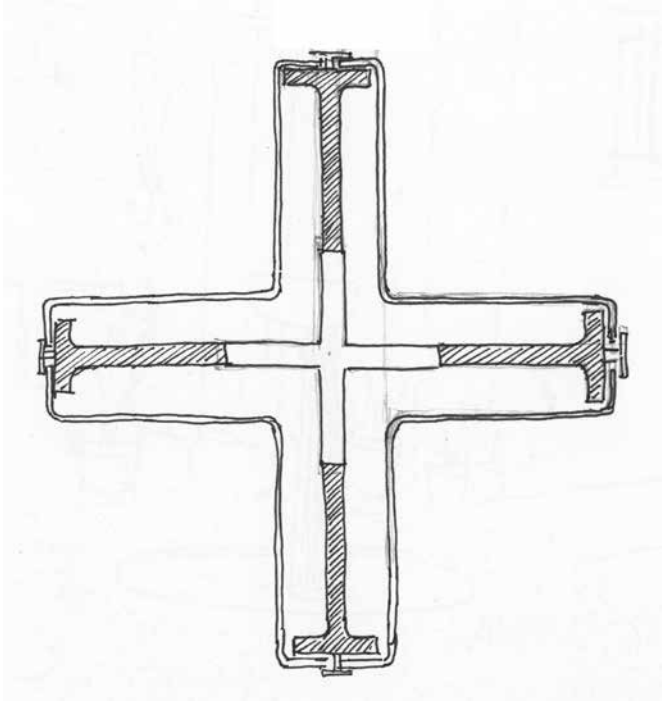




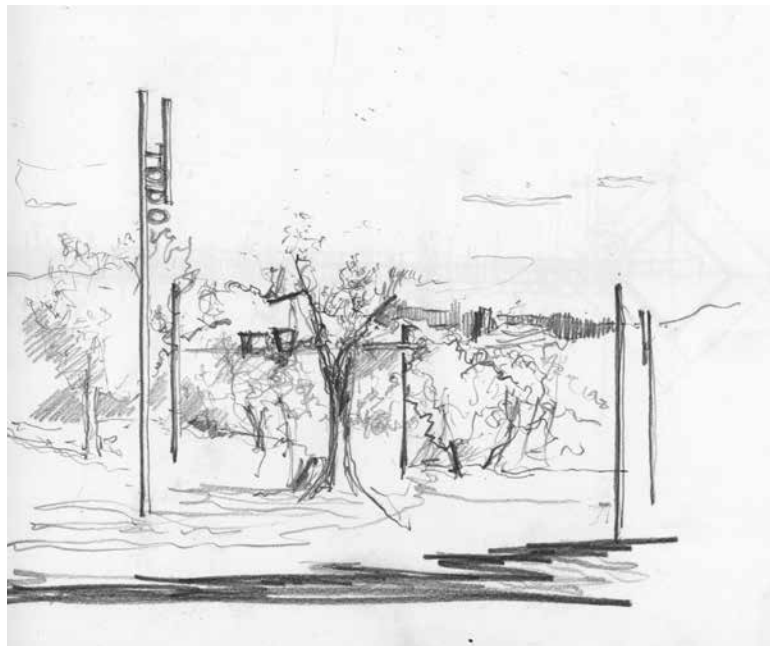
PAVILLON  
BARCELONA  
07.09.19











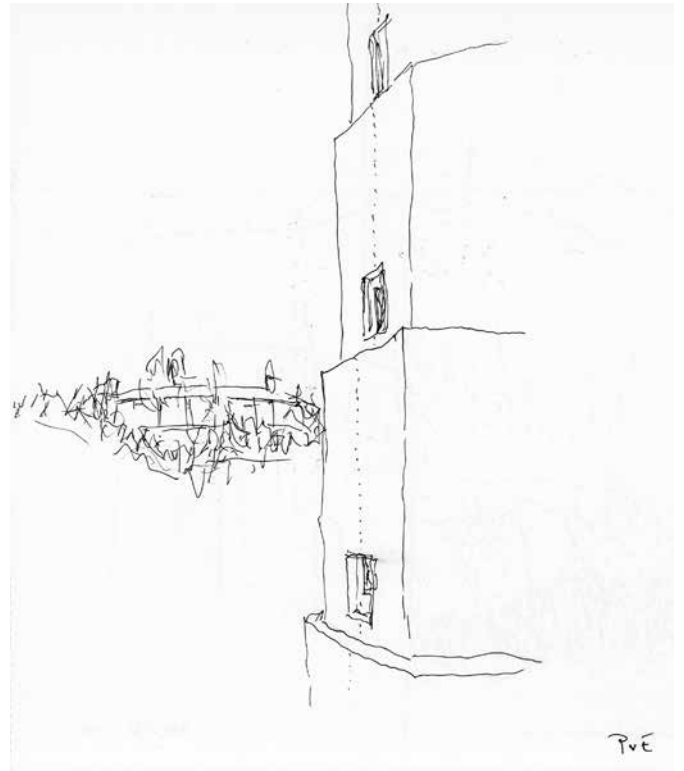


Around the lake tower

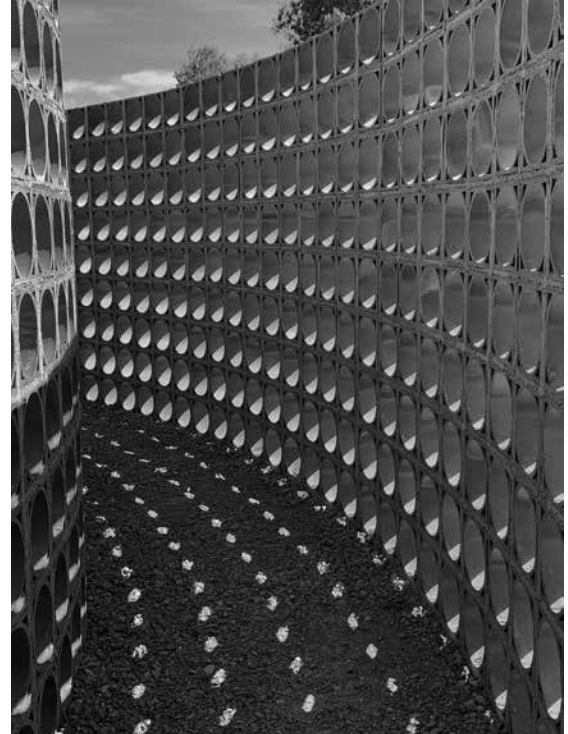
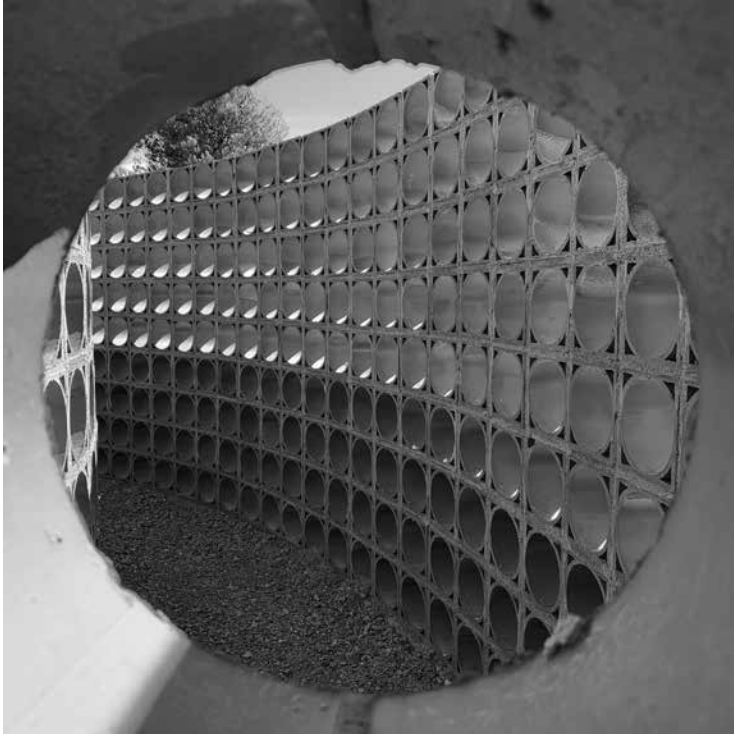
8.9.15



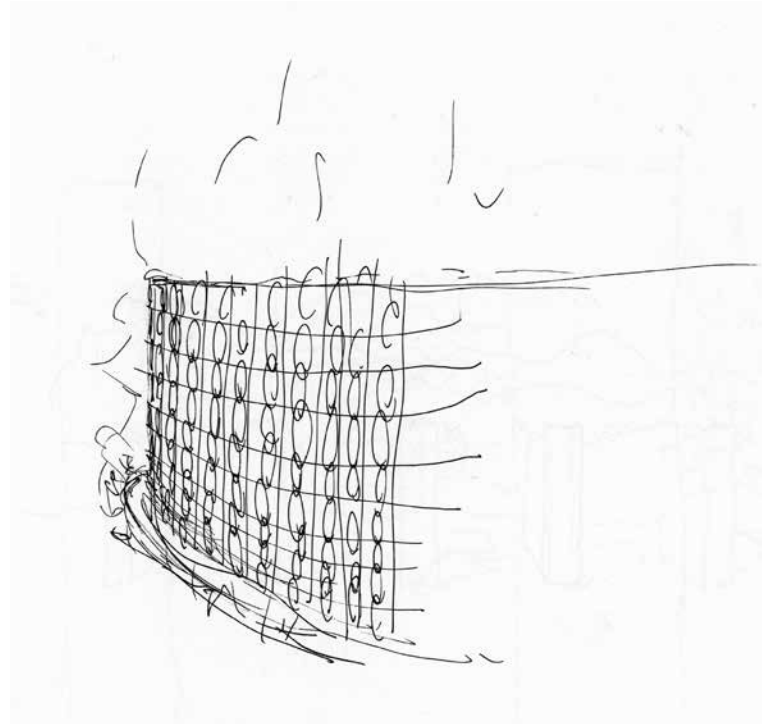
PvE



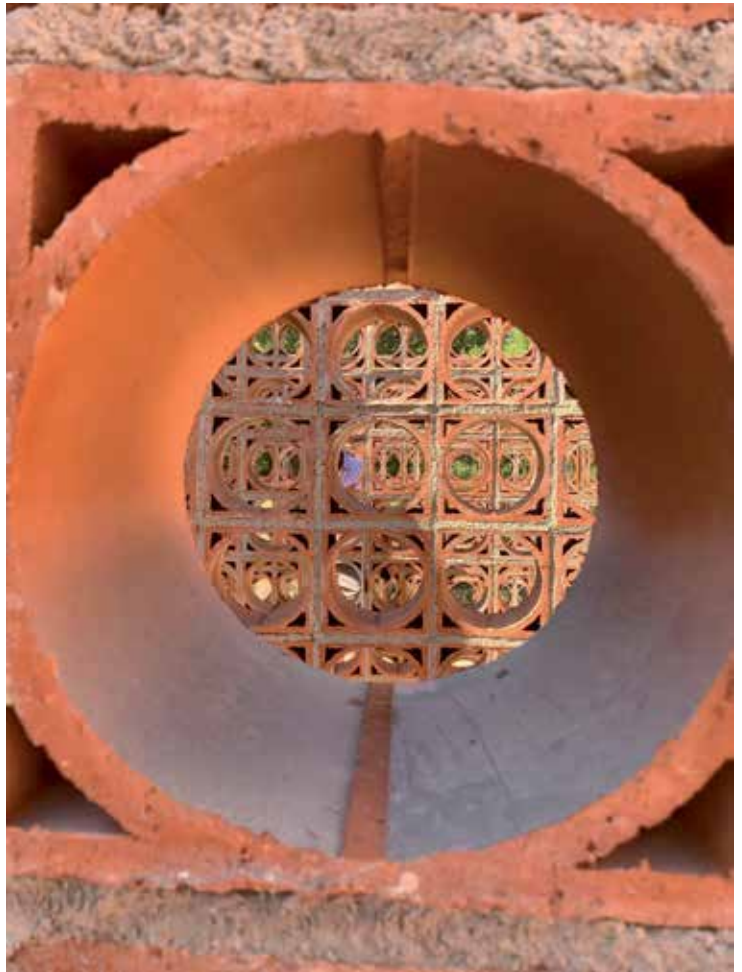
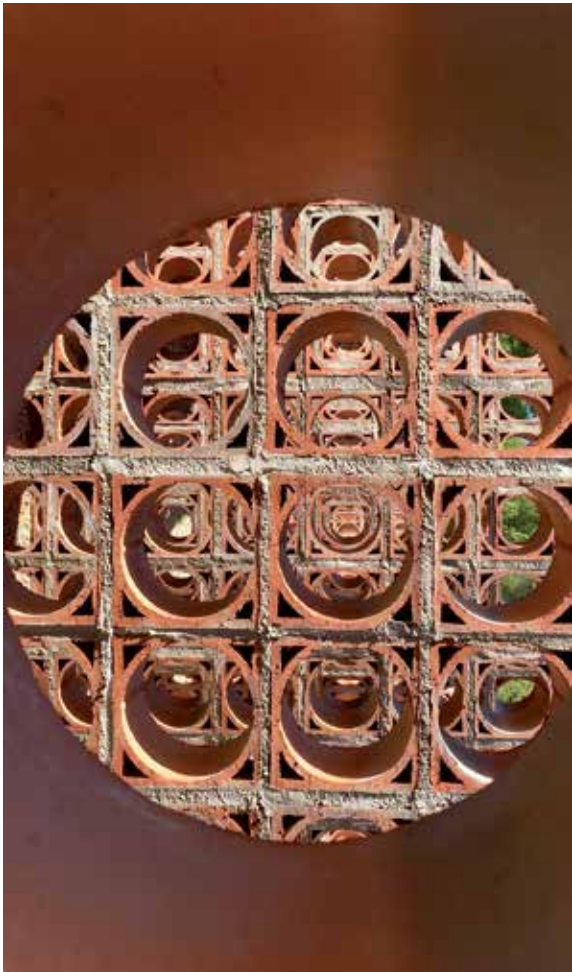
PvE













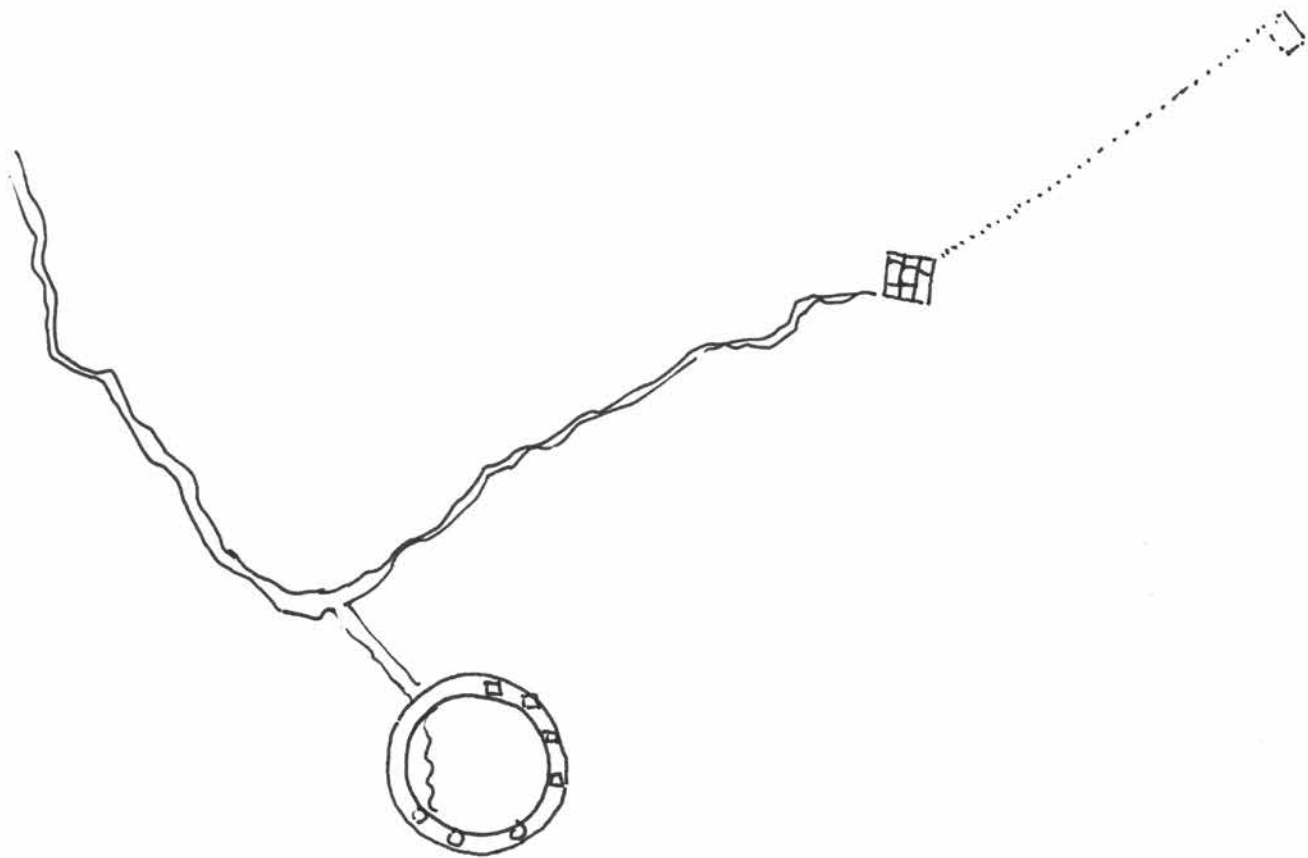


Solo House PVE 19. 9. 19











Christian Bourdais and Eva Albarran represent the meeting of two worlds that you might think are opposites. The developer and the art producer are, however, coming together to create a fine blend of architecture, art and real estate.

Against a 100-hectare natural backdrop of the majestic “Los Puertos de Beceite” natural park of the region of Matarrana in Spain, Solo Houses is a skillful blend of architecture, works of art and landscape paths designed especially for the site. Standing as the first collection of architecture in Europe, Solo Houses invites holidaymakers and visitors to take on an immersive artistic and architecture journey by staying at the Solo Hotel – the centerpiece of the Solo community and catalyst for all activities on the site – designed by the Chilean architect Smiljan Radic or one of the outstanding villas brilliantly thought by a New Garde of International young architects. Designed for both an individual and collective experience, Solo Houses favours the idea of a unique architectural experience combined with exclusive cultural activities covering art, cinema, nature, sport and cuisine, such as a site-specific landscape designed by Bas Smets and a cultural program curated by Hans Ulrich-Obrist for example.

As Solo Houses has not yet reach its definitive form, the on-going project currently welcomes two beautiful bespoke holiday homes designed by Pezo Von Ellrichshausen and Office KGDVS out of the fifteen homes and one hotel planned to be built along the Solo journey.

Alone or in a group, with family or friends, Solo Houses is an unusual, stimulating and thought-provoking destination. Solo Houses is where architecture is experienced.

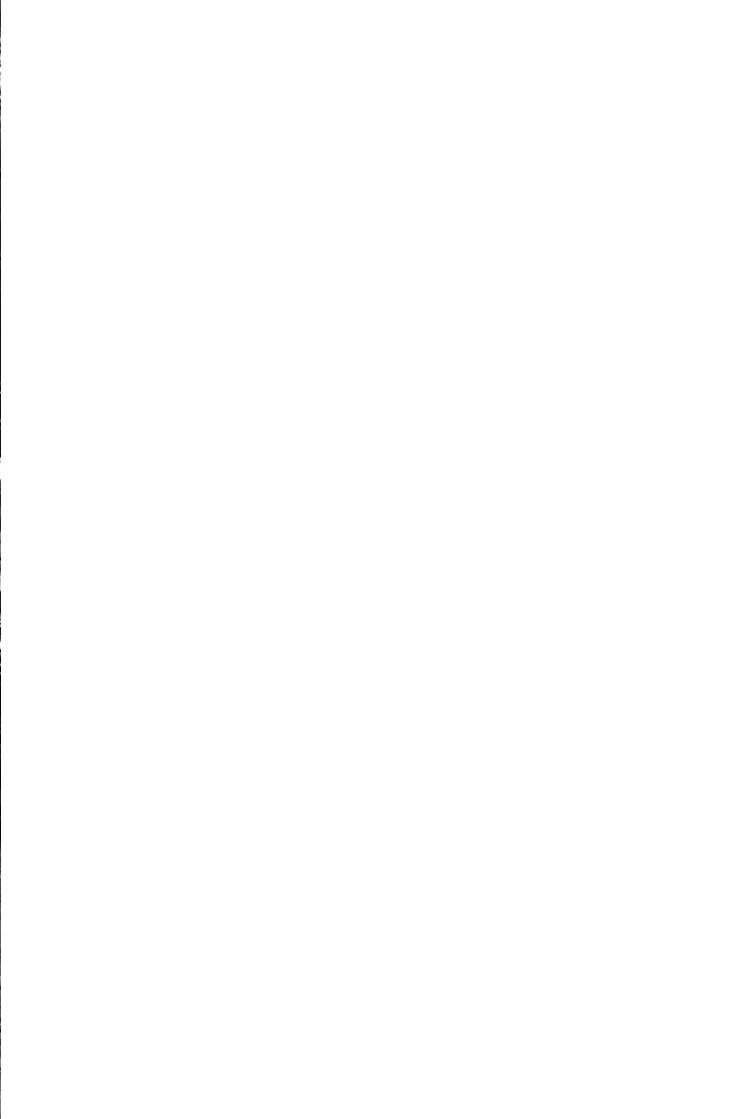
<https://solo-houses.com/about/>

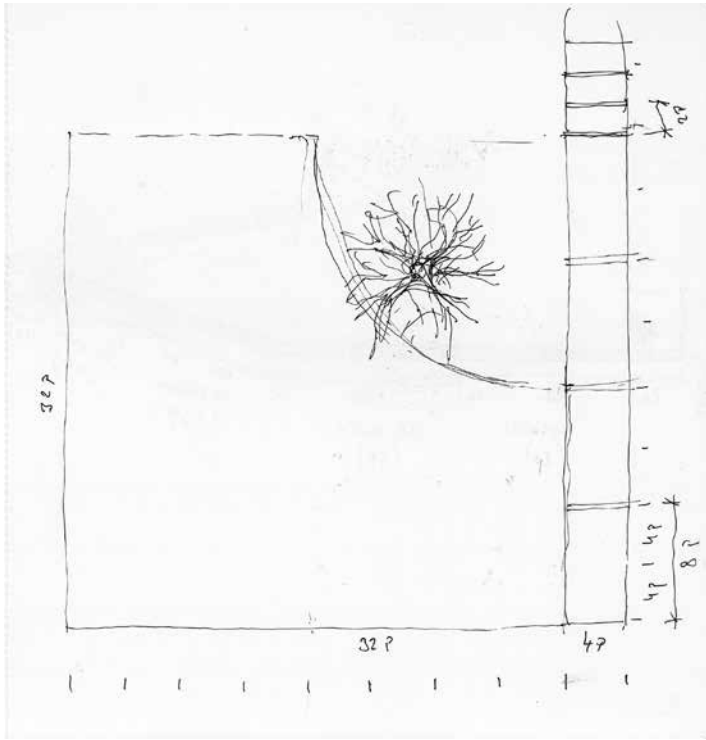
It is a terrific viewpoint over the nature reserve that has just been completed by Maurizio Pezo and Sofia Von Ellrichshausen. Designed as a platform that gives its occupants the sensation of floating on air, the house is made entirely of concrete and its design is perfectly symmetrical and homothetic. A patio with a swimming pool – a return to Mediterranean architecture where the search for coolness and shade is a necessity – occupies the centre of this house, perfect for sharing good times. All the rooms open to the outside through large bay windows that can be fully retracted so that the spaces become full-fledged patios.

<https://solo-houses.com/house/solo-pezo-von-elrichshausen/>

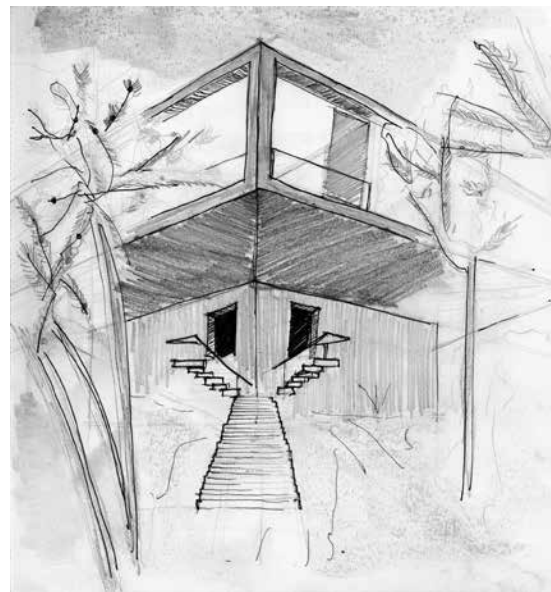
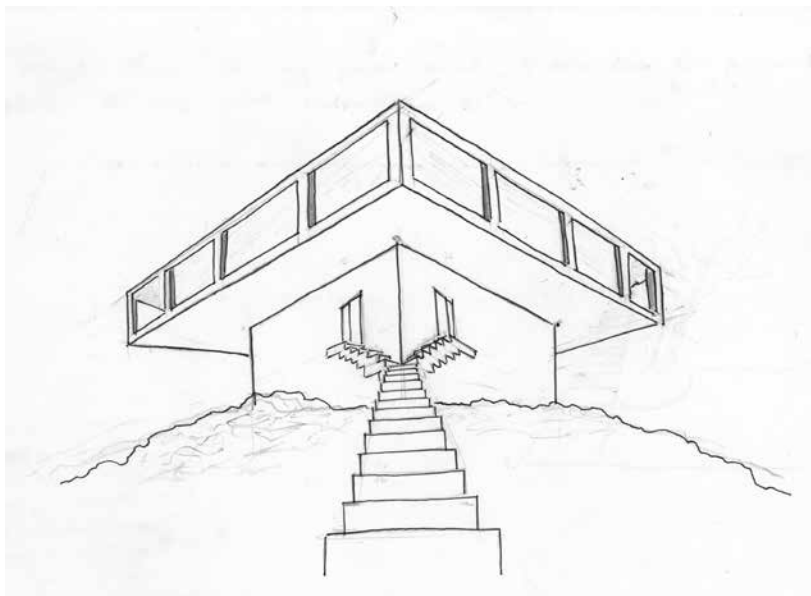






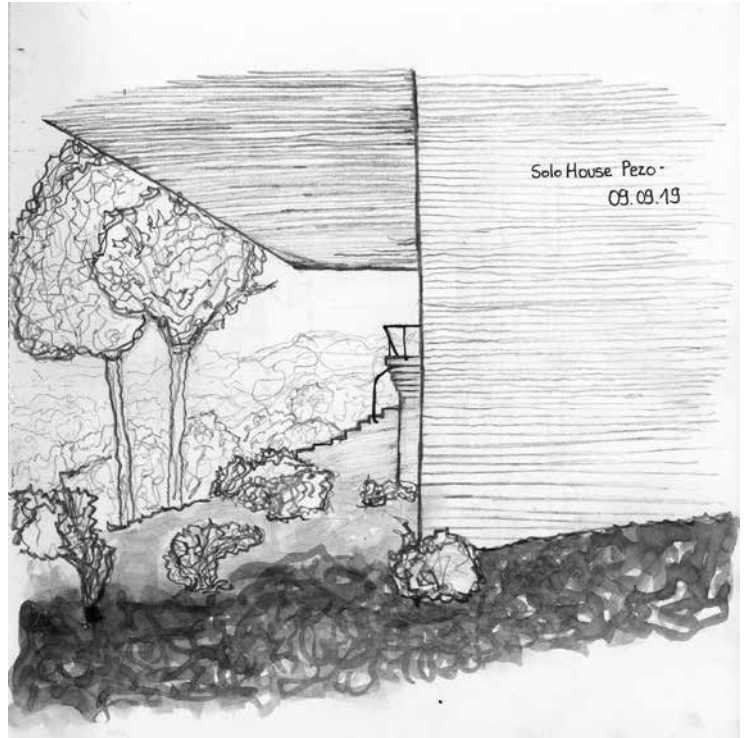






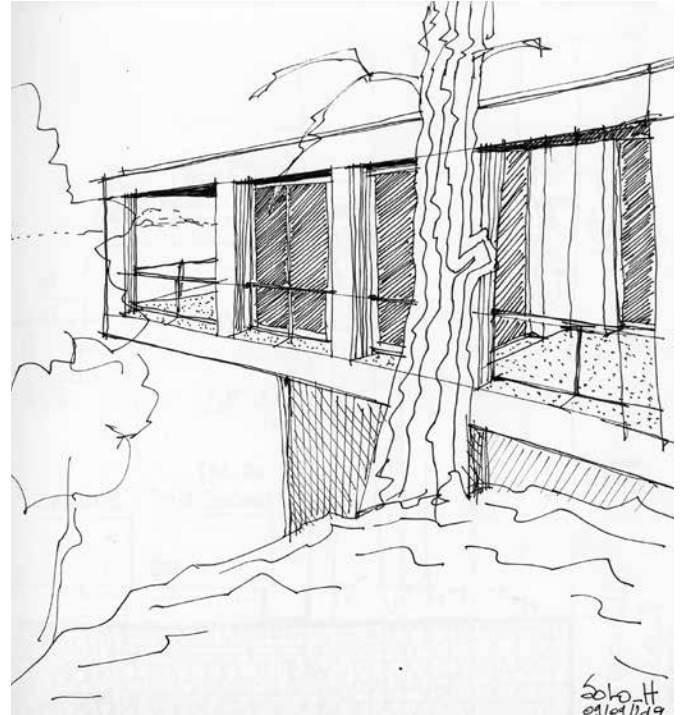




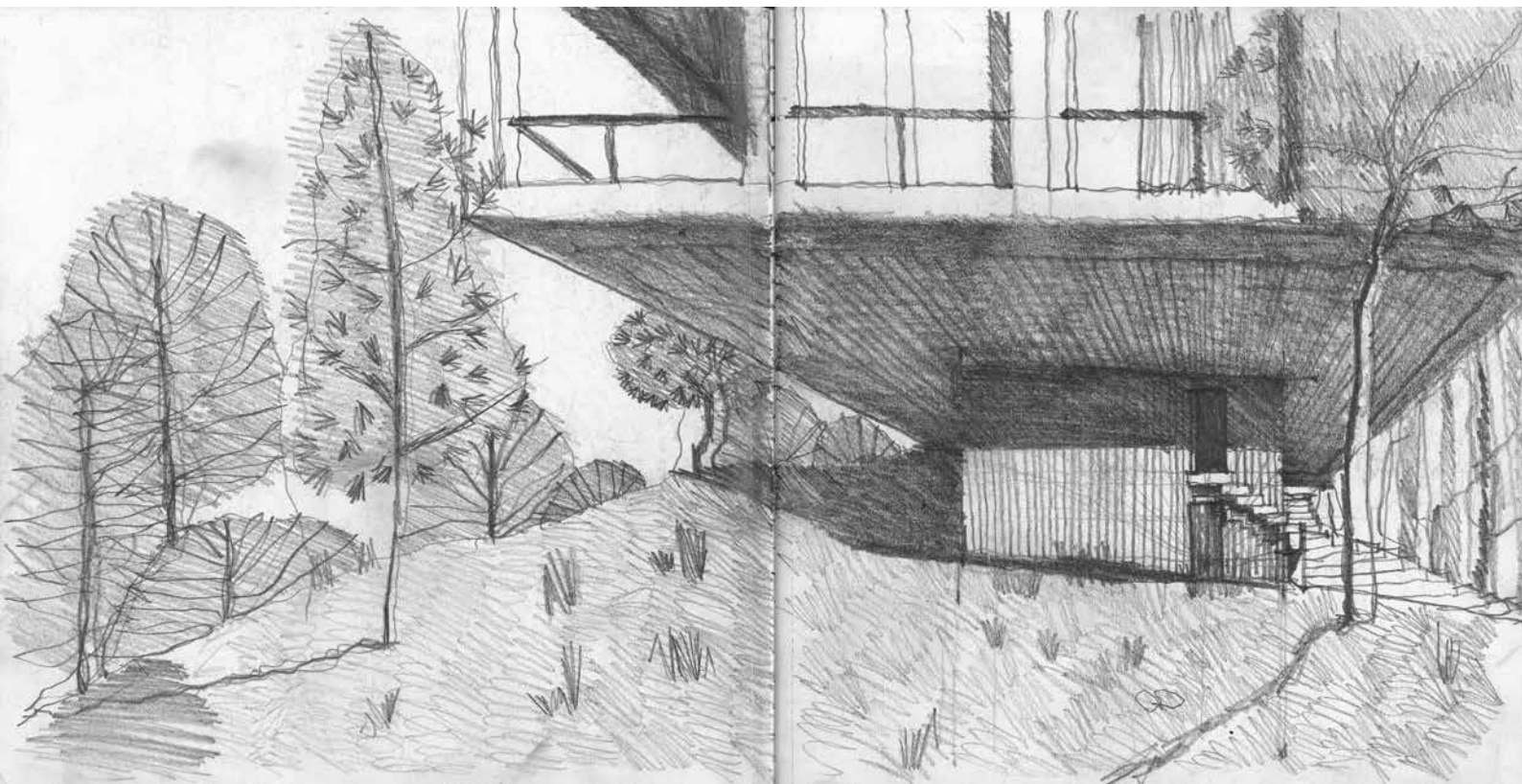


Solo House Pezo -  
09.09.19

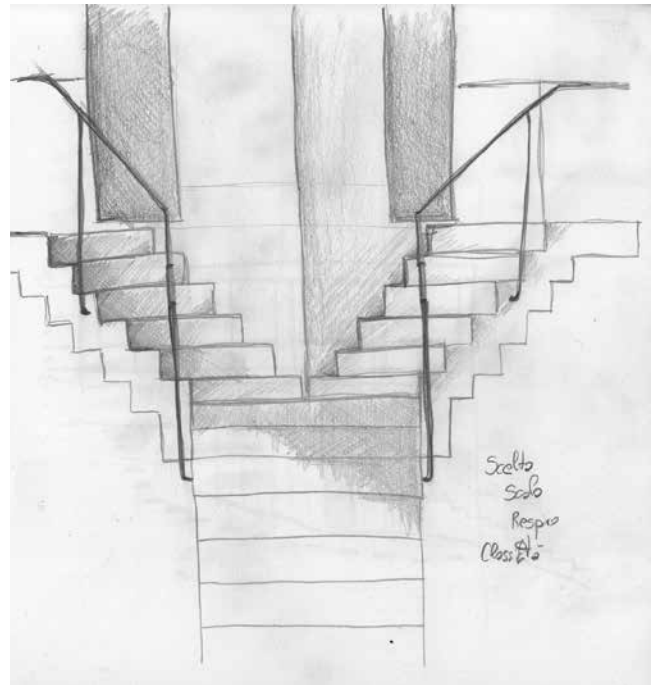
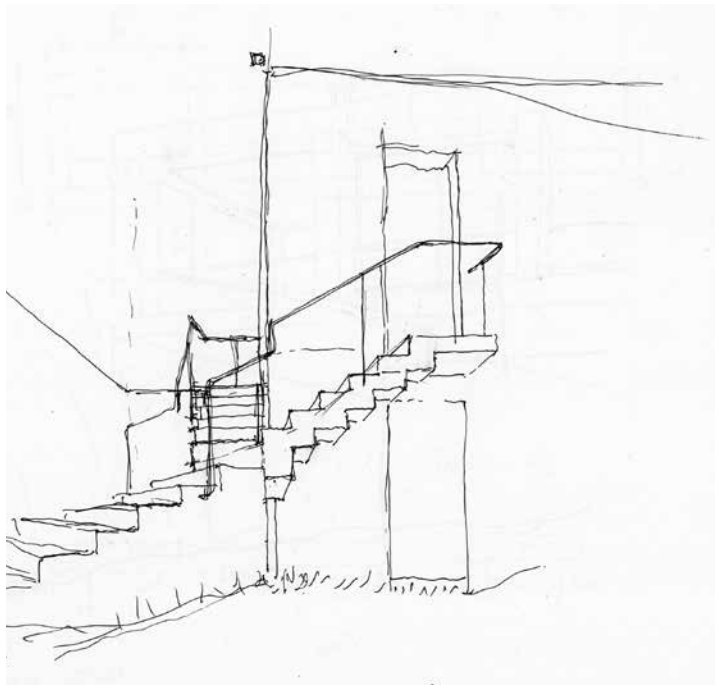


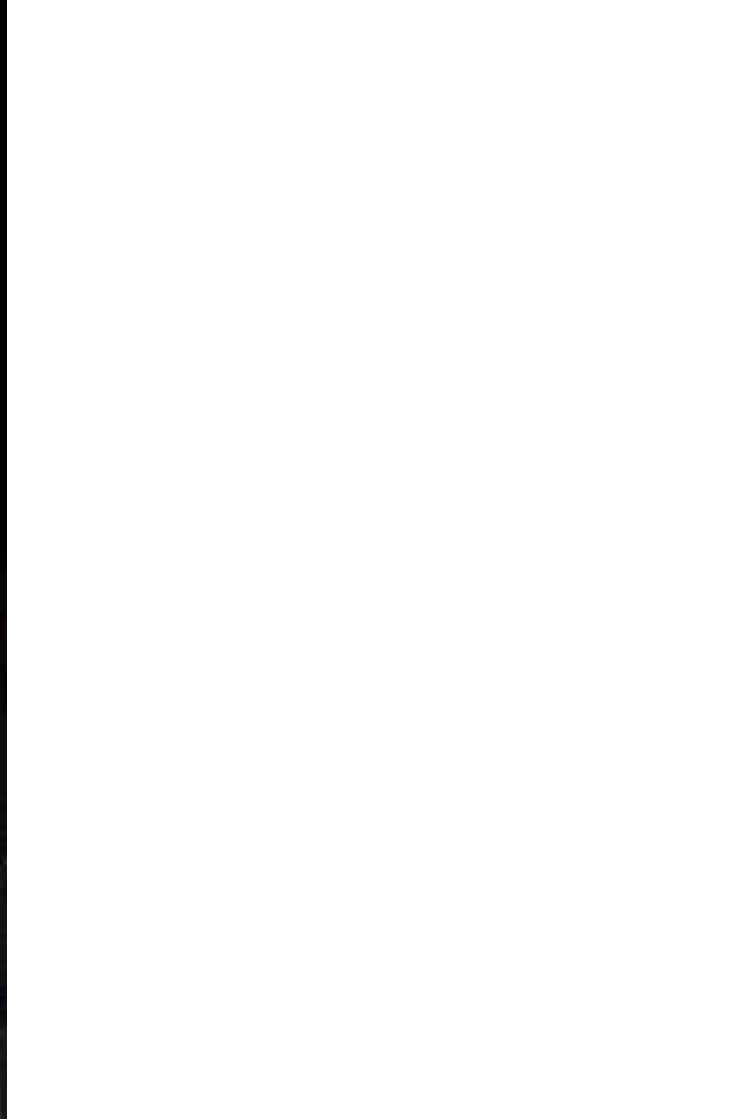




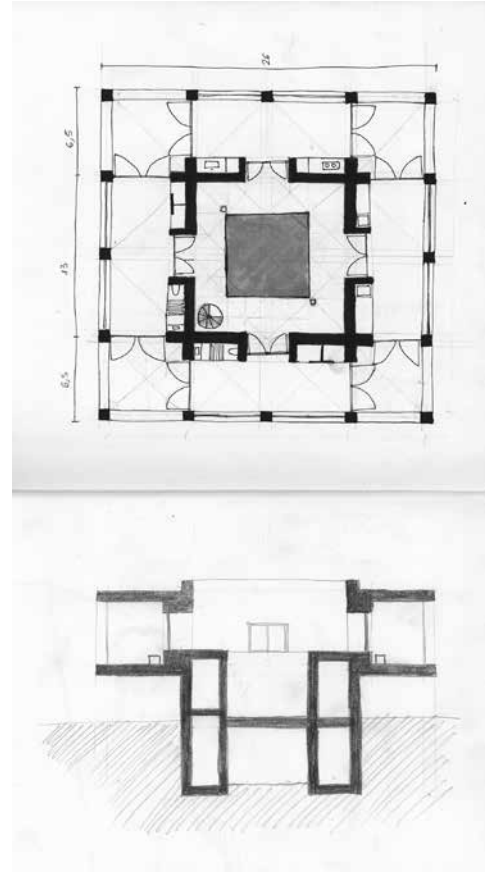
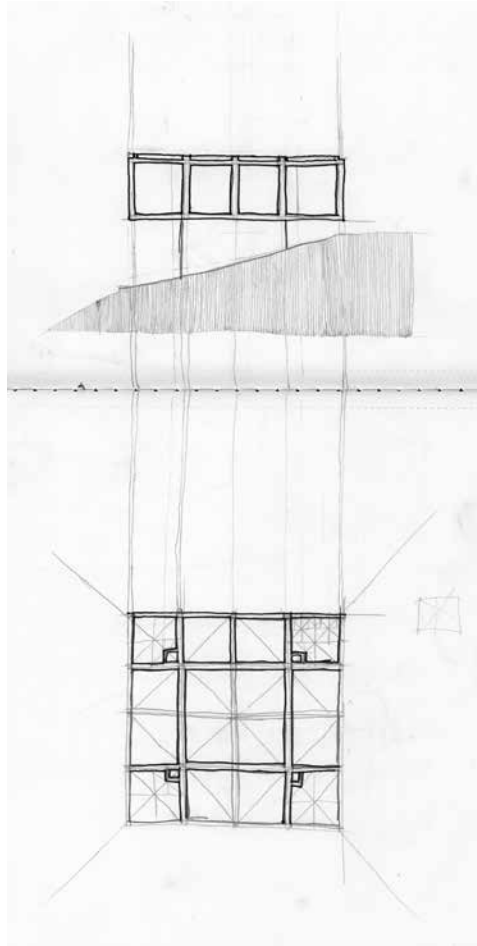




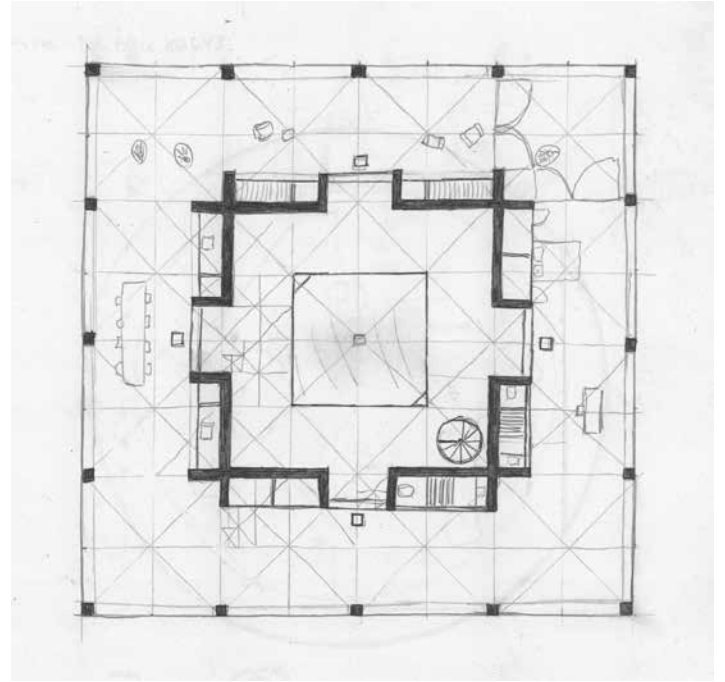
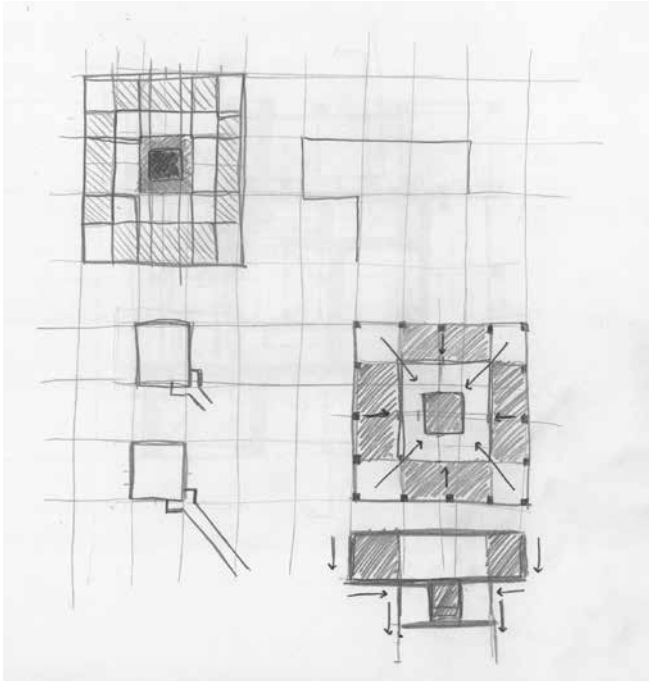




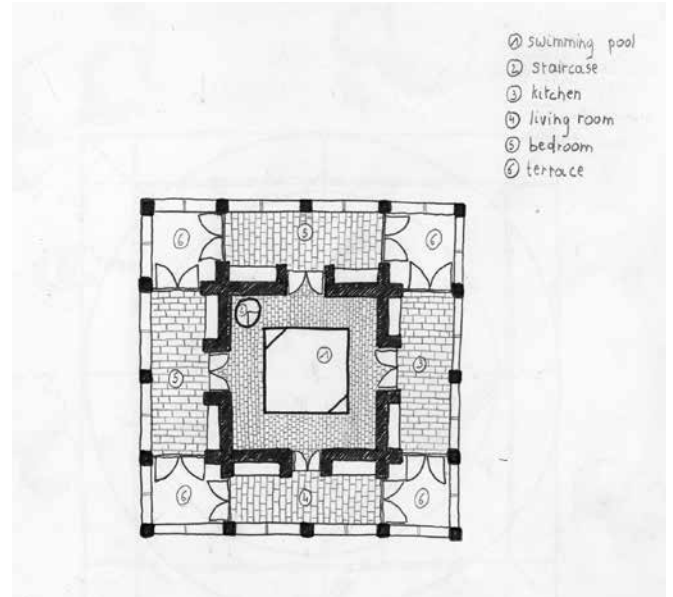
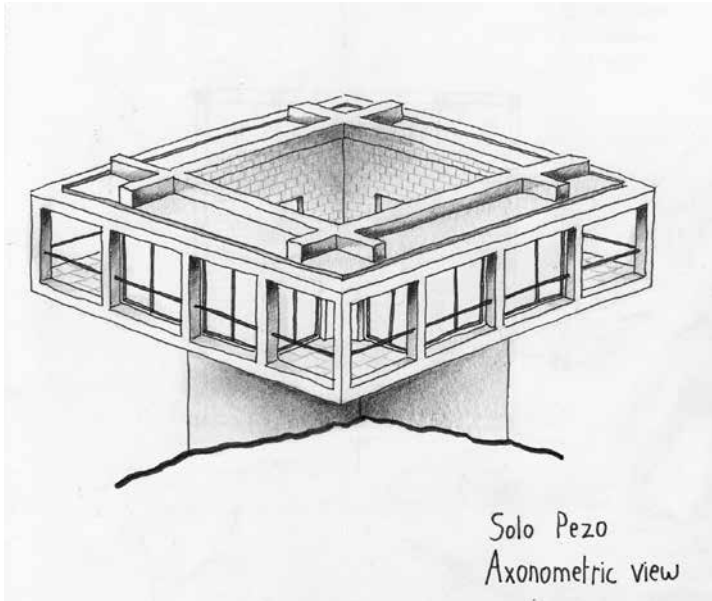




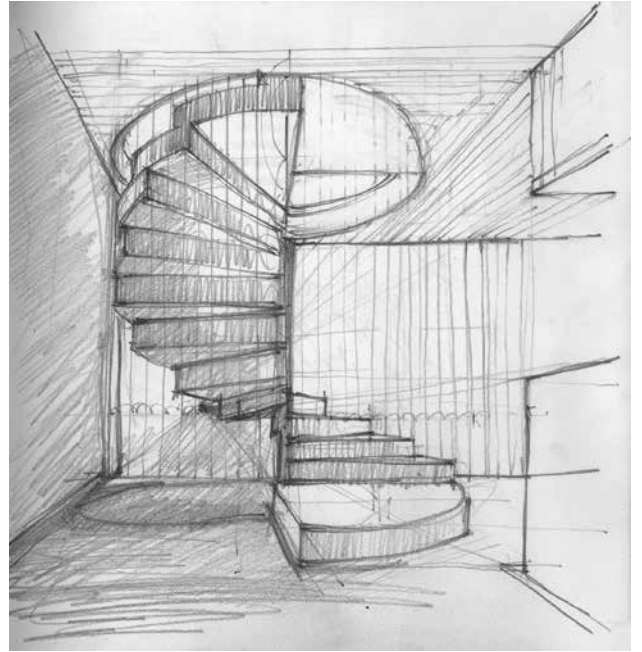
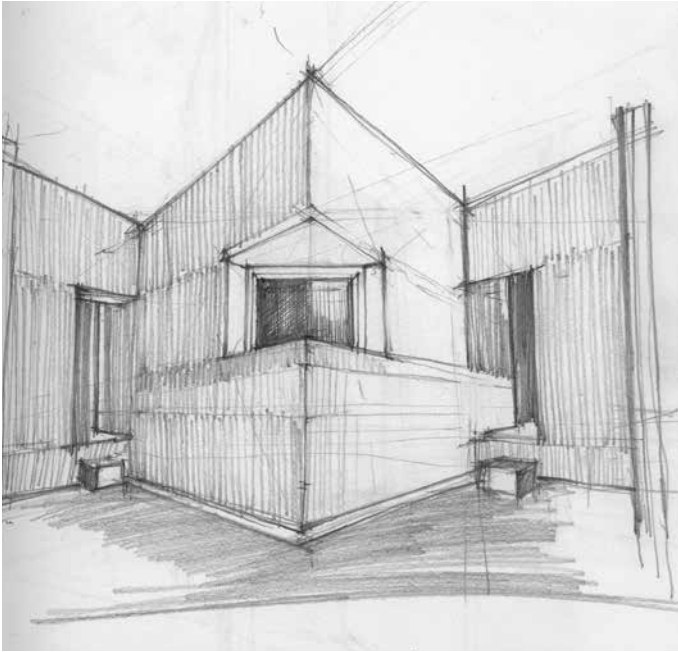










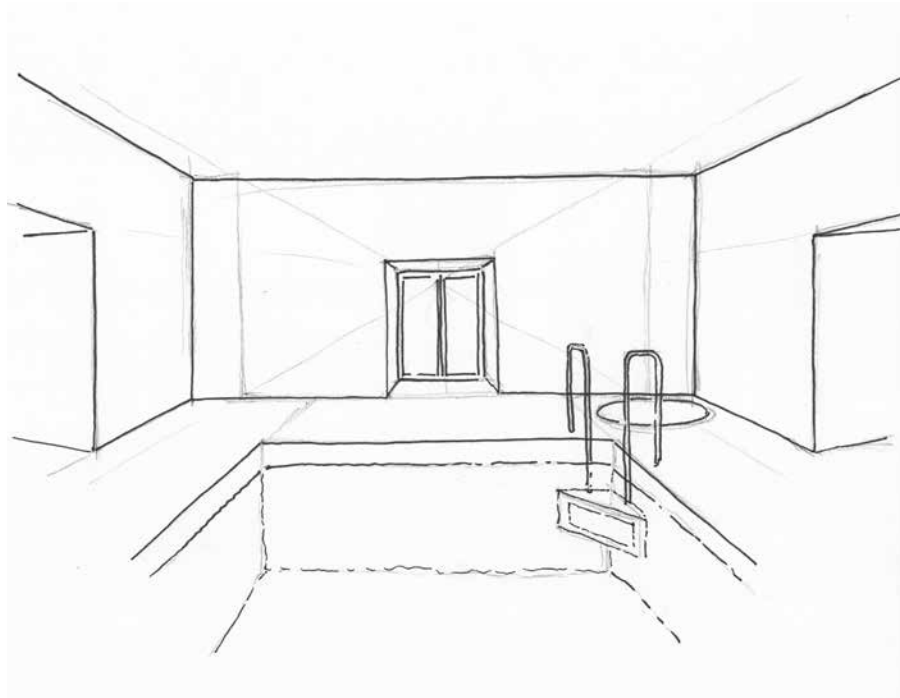






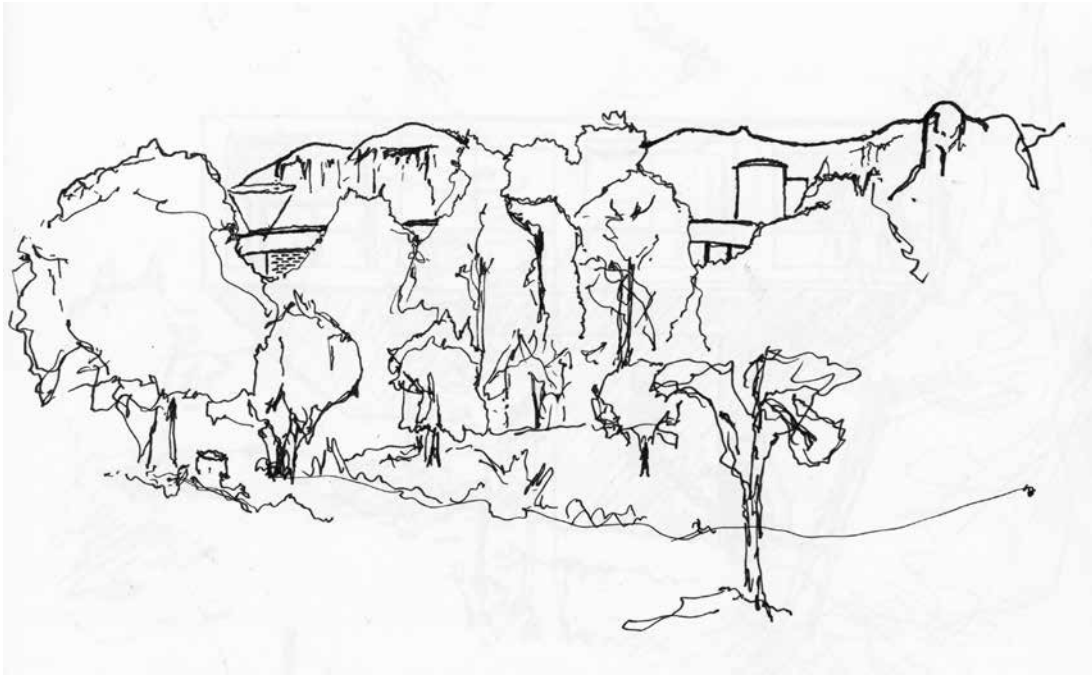






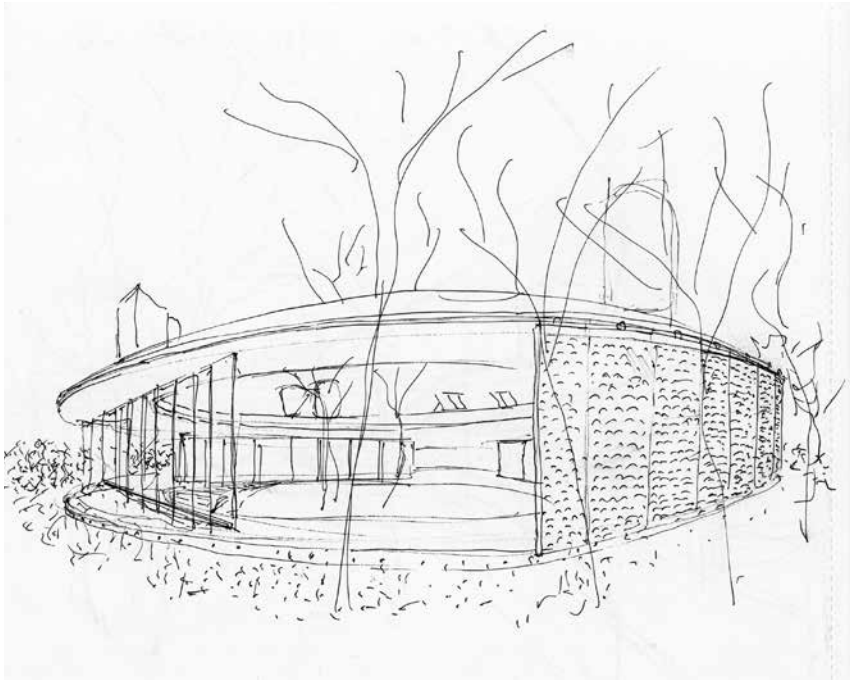




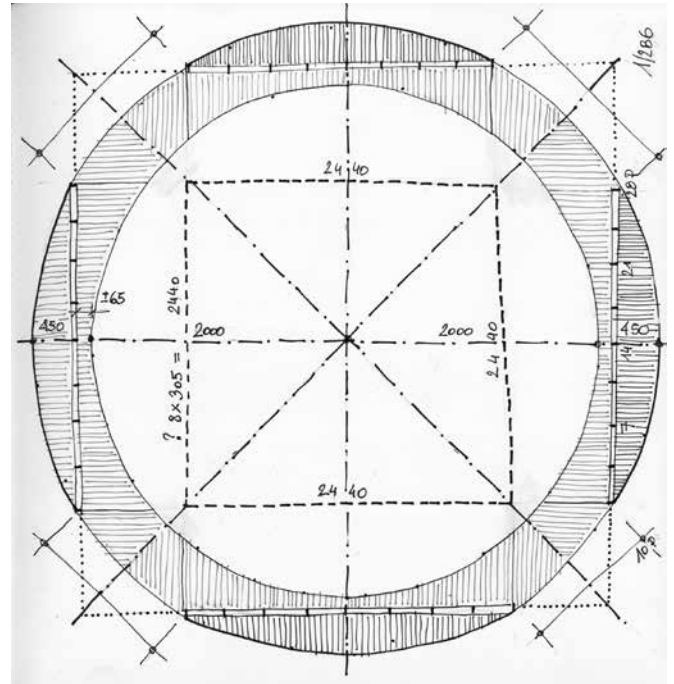
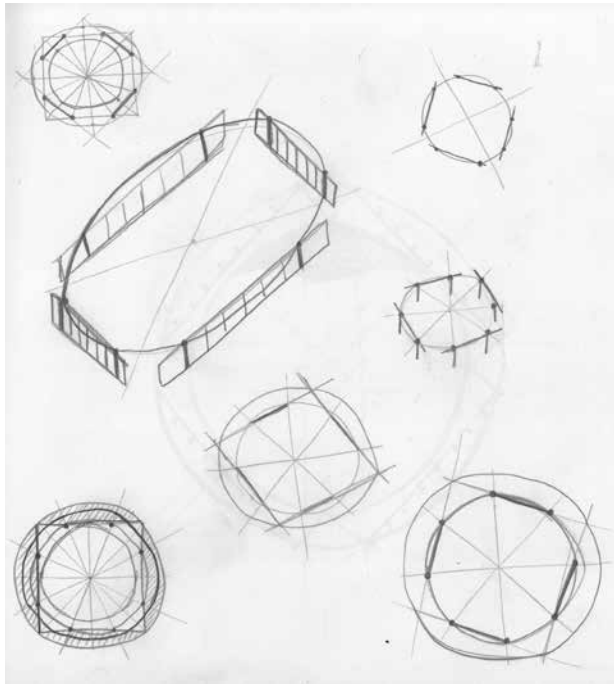


In seeking to emphasize as much as possible the natural beauty of the site, the architecture studio Office KGDVS has created a house without limits with regard to the surrounding nature – a living area with the landscape running through it and a comfortable space built on the plateau that shelters it so that it almost disappears. The circular house provides a covered trail between the nature reserve and the interior patio. Four sets of posts support the roof and separate the rooms and living areas. The façades can be fully opened to remove the border between inside and outside. The patio, at the heart of the property, is partly taken up by a lake created for the comfort of residents.

<https://solo-houses.com/house/solo-office-kgdvs/>

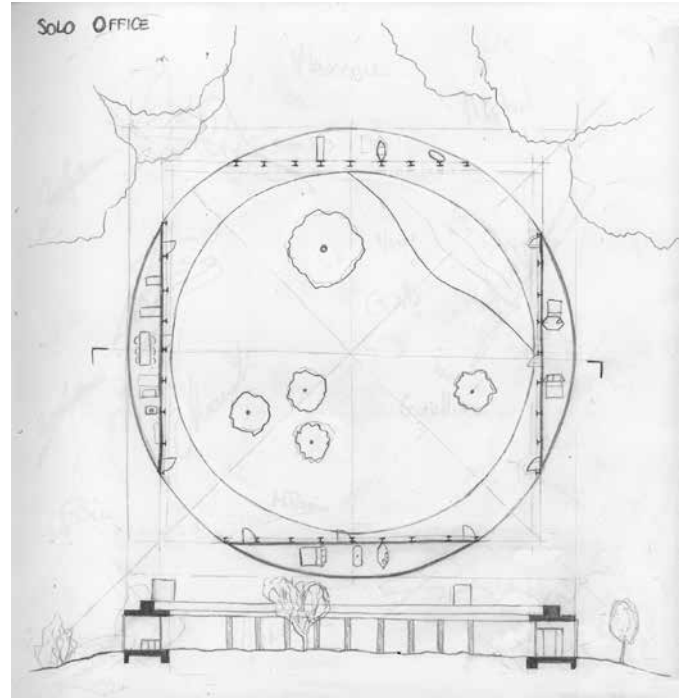
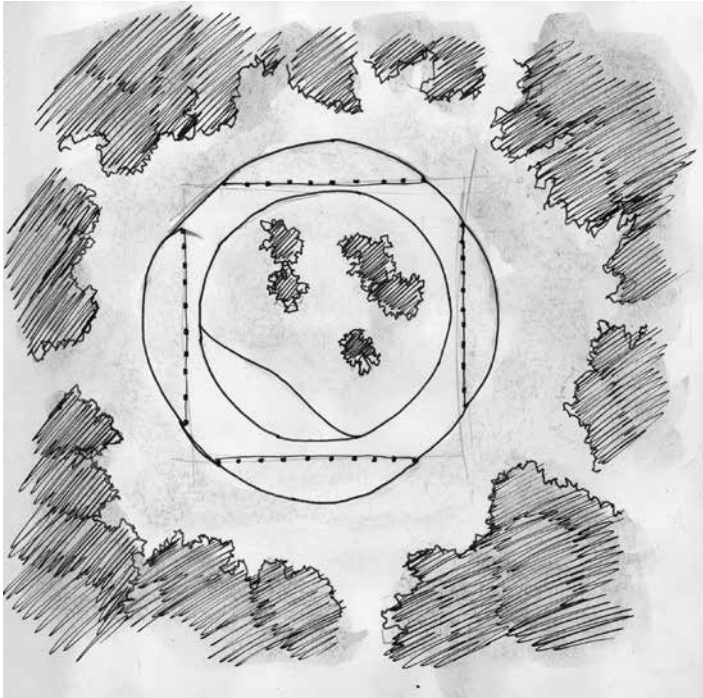




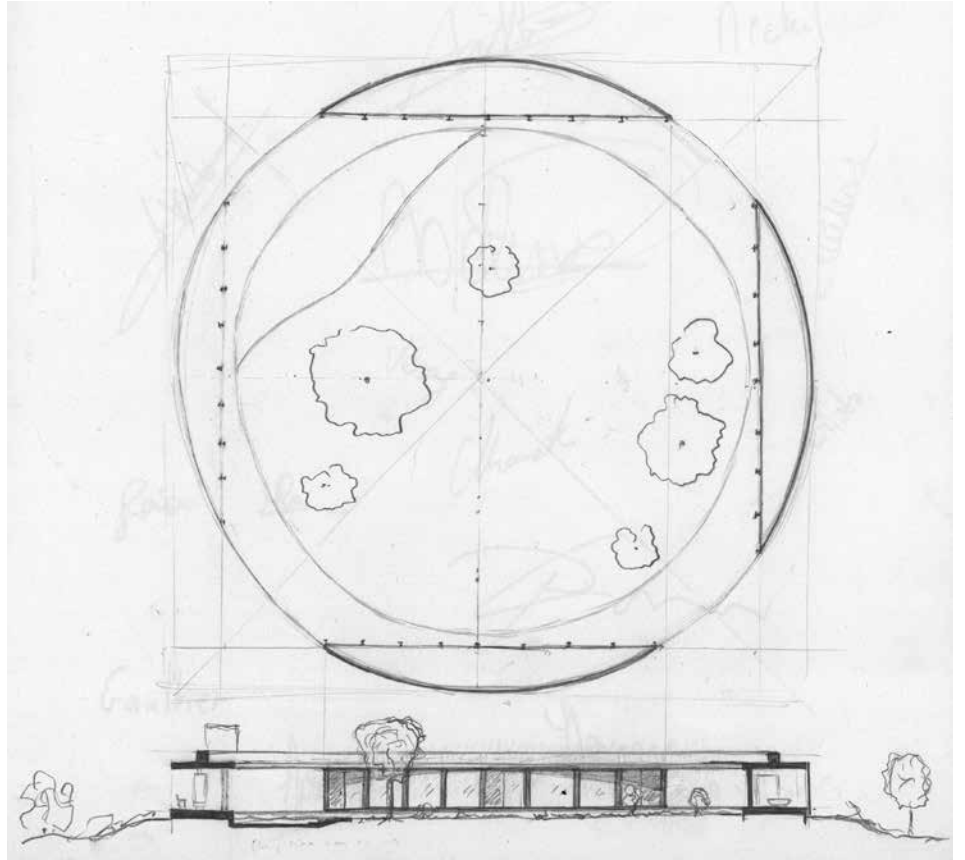
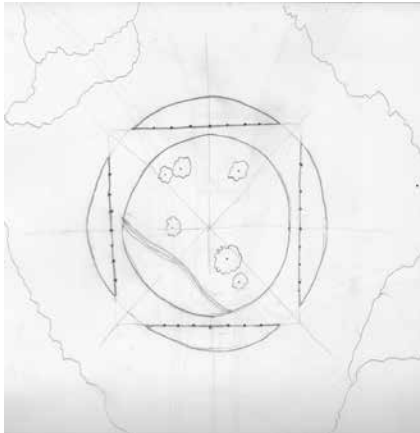
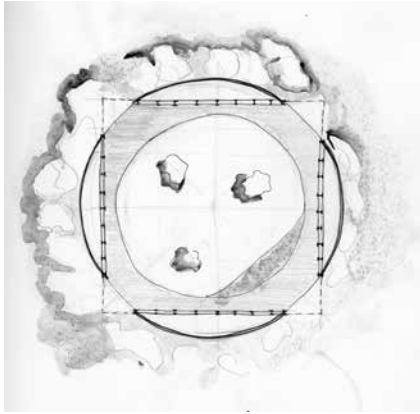




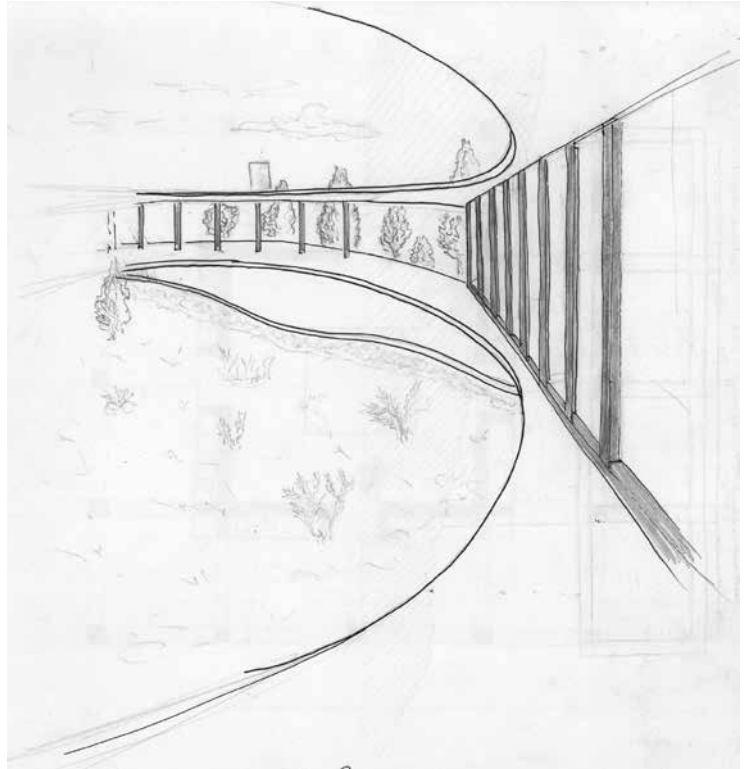
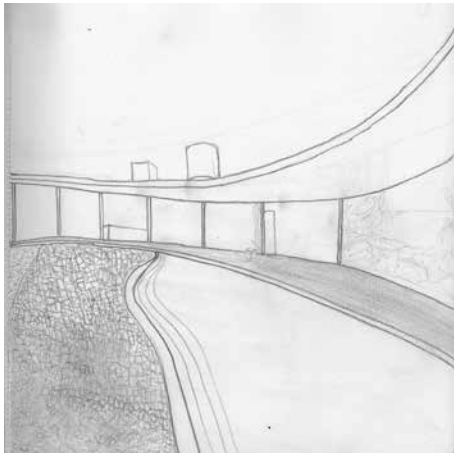
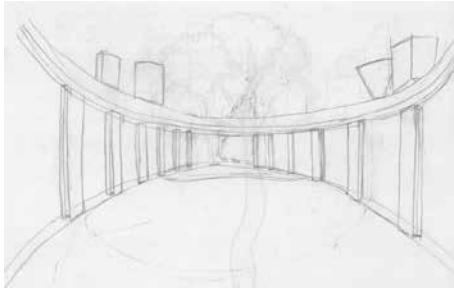
Solo Office - PLAN





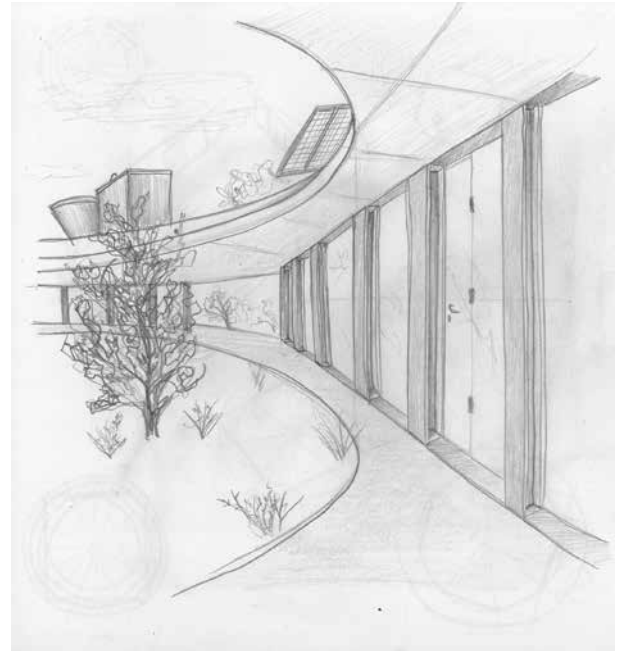




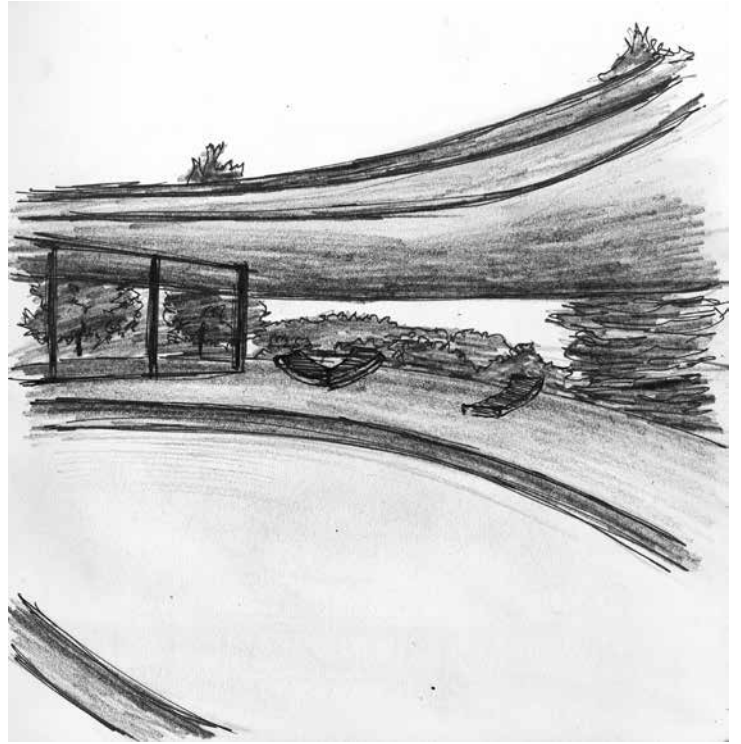




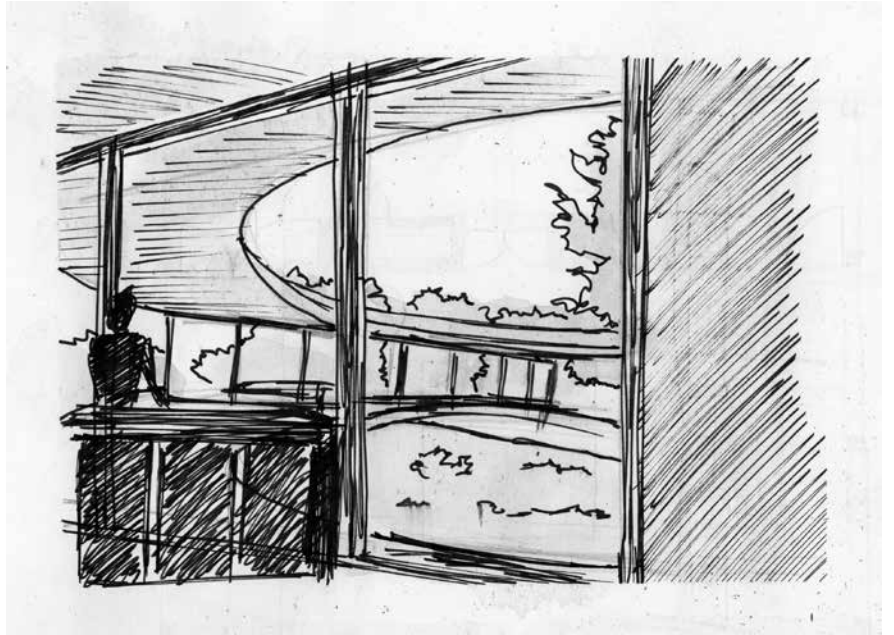




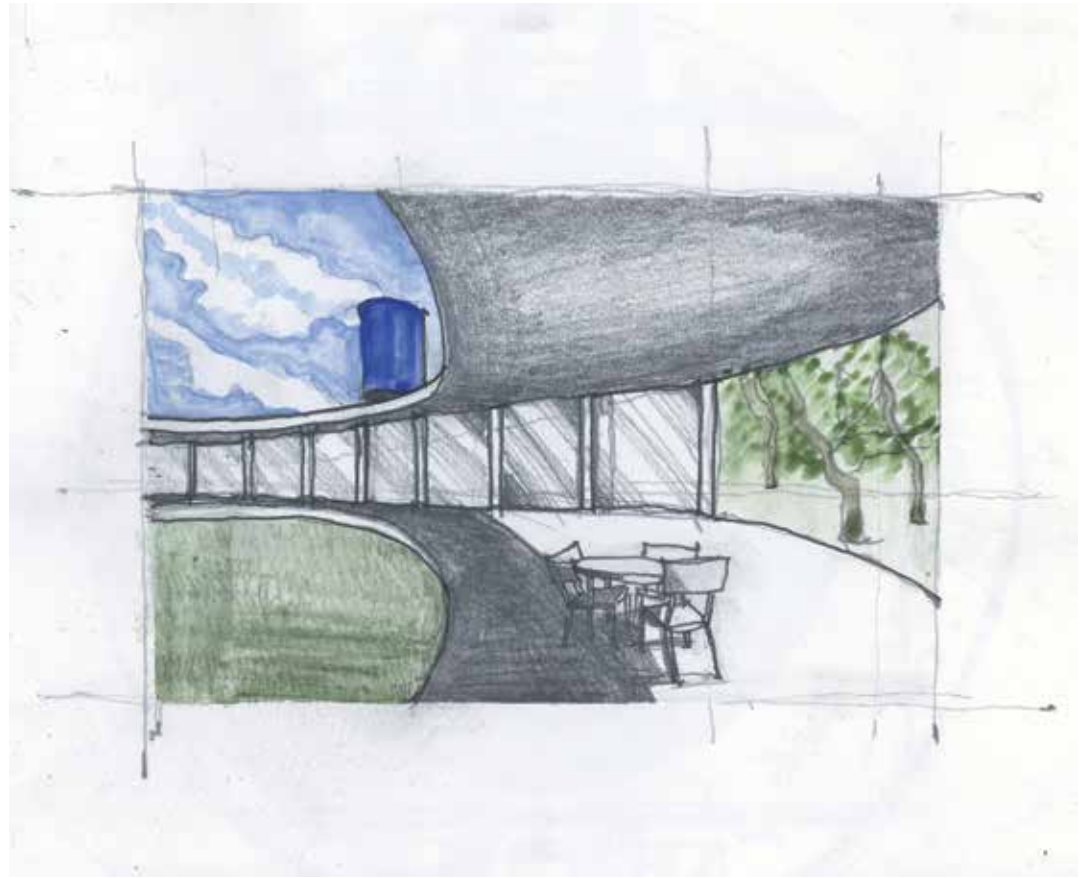






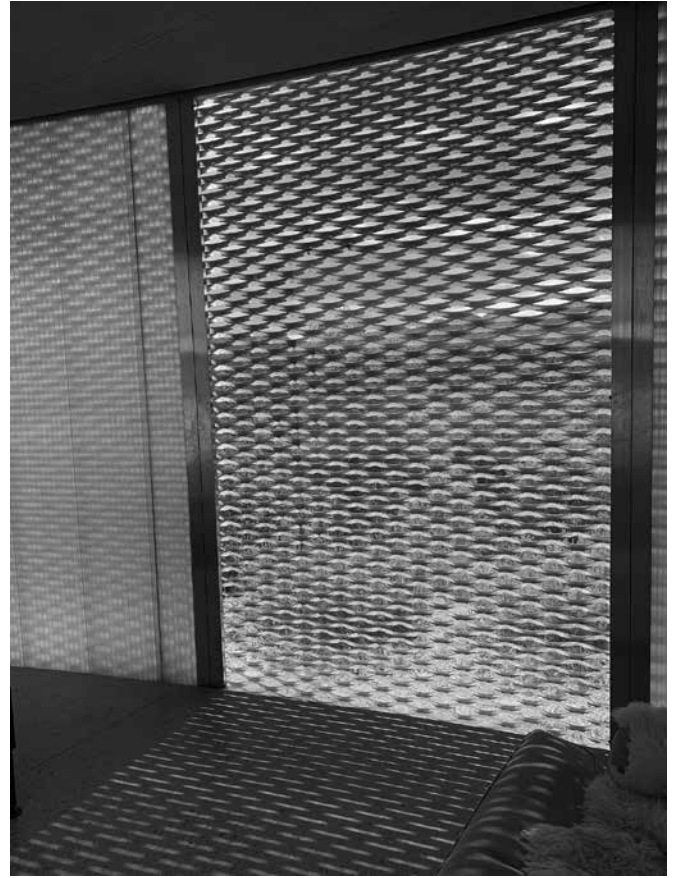




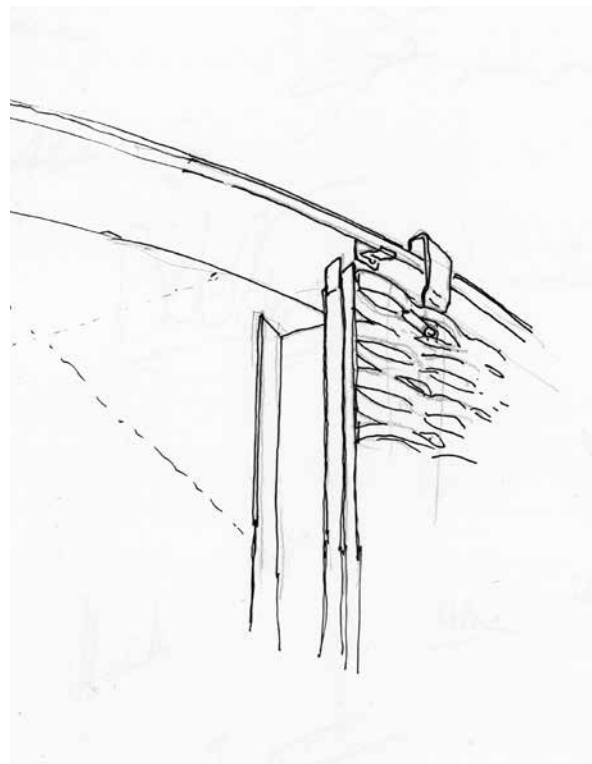
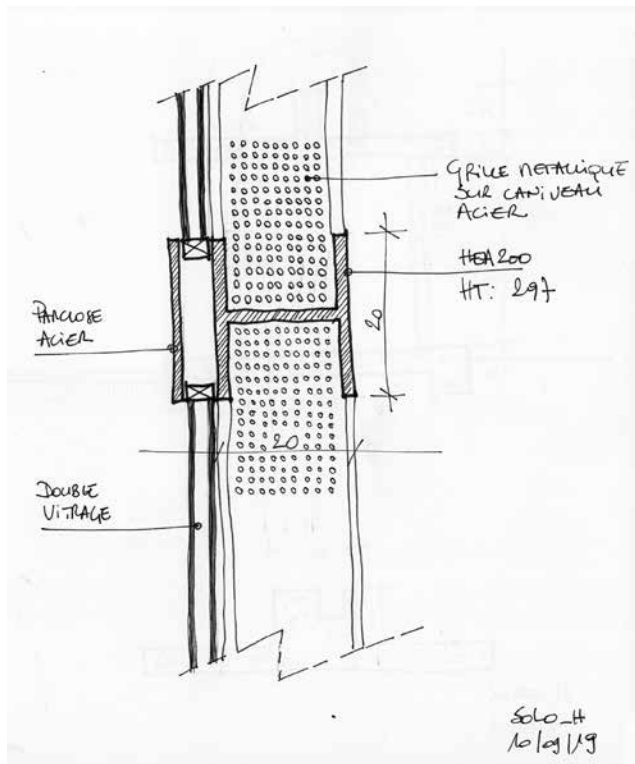




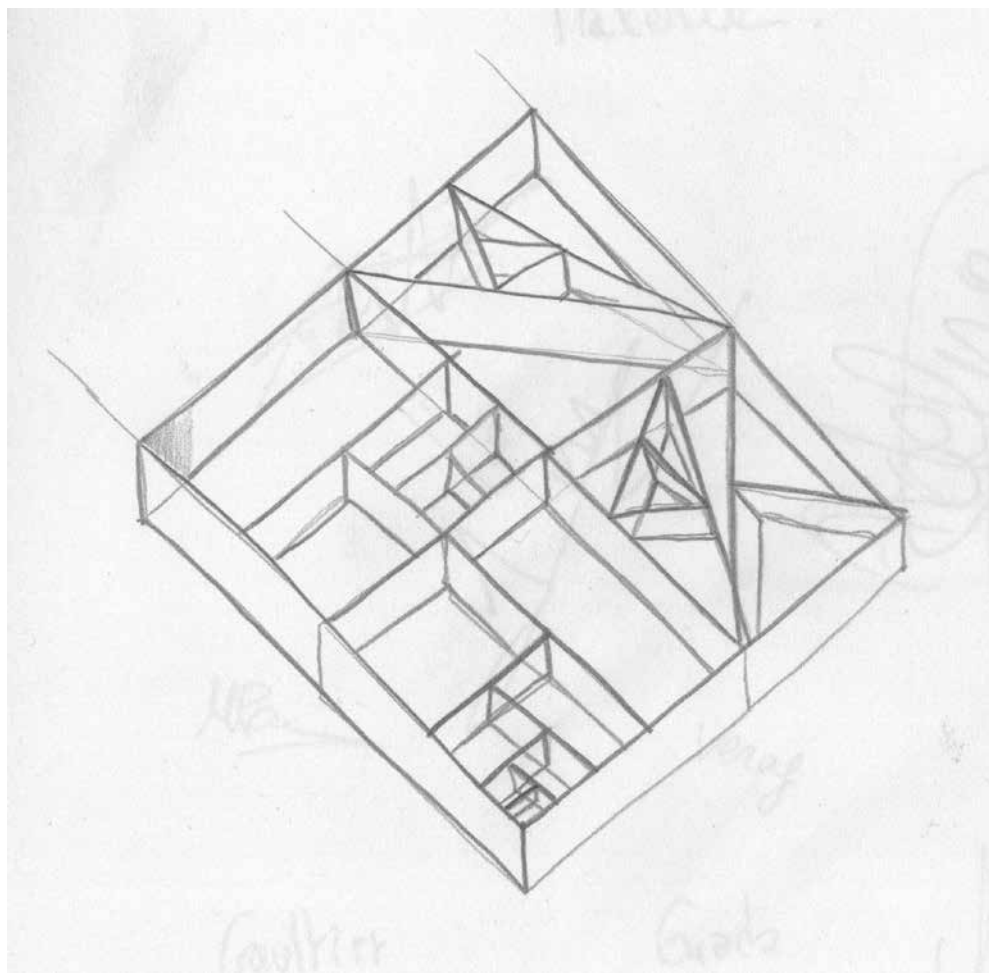












L'installazione prende pieno valore quando diventa "ponte";  
la natura passa attraverso l'oggetto per arrivare all'uomo,  
ed interagendo con esso egli percepisce la natura.  
Un rapporto di scambio tra viste, luci, suoni, ritmo ed emozioni.

Giada

Perché?

Questa è la domanda che ogni installazione porta a fare. Per alcune ho trovato subito una risposta, per altre abbiamo cercato di trovarla insieme attraverso la condivisione delle nostre impressioni, per alcune non l'ho ancora trovata...

Gaia

Peter Downsborough  
Todo S, 2019

L'installation se fond presque parfaitement dans la masse, de part la couleur qui fait penser au tronc de l'arbre comme si l'artiste cherchait à redresser l'arbre pour avoir cette ligne droite parfaite.  
Todo S me fait penser à Todo es « tout est... » et du coup laisser le visiteur dans le questionnement constant. La recherche du savoir qui pourrait être lié à la recherche de la forme parfaite.

Je trouve que toutes les œuvres interagissent entre elles et avec la nature elle même. Que chacune d'elles nous apporte une expérience de vie.

L'activité a facilité les échanges entre les individus mais aussi entre ces hommes et la nature.

Roumaissae

L'architecture du village et la disposition des rues rapprochent les gens et créent le lien —> respect des personnes + proximité, induit les rencontres.

Le point de vue depuis le château (endroit vaste, large, spacieux) // rues étroites —> paradoxe entre la découverte du village par des endroits étroits etc, et le fait de se retrouver face à une immense construction. Cela nous interroge.

Selon moi, les différents espaces du village se confrontent entre eux, et créent ainsi une lecture vivante et inattendue des espaces.

Lou-Elise

La première journée a été très riche en découverte. Nous ne nous connaissions pas vraiment et au fil de la journée grâce aux visites, même si nous ne parlions pas forcément la même langue nous avons pu nous comprendre par le langage architectural. Pendant le parcours Solo House nous avons tous essayer ensemble et avec beaucoup de points de vues différents de comprendre le but des artistes, ce qui était très enrichissant et nous a ouvert l'esprit.

Maxence

Going through the wild parc felt like leaving our civilisation for a while. To reach the main goals, the houses, a transition is needed to think the same way as the architects did to create those rejects. This transition can be more accessible by meeting specific points on the way that set our minds into an abstract world.

Gaultier

The houses are made by different and specific means with a complete new idea of what architecture is that make us lose our boundaries. The buildings are fixed at their places but are movable at the same time. You are inside and outside the project which merges with the environment. We get a completely new perspective of what the house is where it is not just a place to protect ourselves from the nature but in contrary, let us get along with it.

Anthony

Solo House è l'idea di esposizione a cielo aperto dove il lato architettonico si fonde con quello artistico. Creano un percorso dove il protagonista vive un'esperienza in un museo dove i limiti sono posti dagli orizzonti.

Le opere monolitiche creano forti contrasti con la natura boschiva e montagnola senza però sovrastarla.

Punti di vista, ombre, suoni, riflessioni,.. Tante esperienze sensoriali che rendono questo posto unico nel suo panorama.

Inviato dal mio dispositivo Huawei

Michele

Les artistes ont représenté chacun une œuvre et nous ont fait découvrir des perceptions que l'on ne pensait pas en utilisant nos sens. Le visuel est la première perception que l'on ressent avec ces jeux d'ombres et de lumières. L'ouïe est aussi perçue dans une des œuvres qui fait partie intégrante la "Fernando Sáncha Castillo" de Evento. Ils utilisent tous des matériaux et des formes différentes, parfois en trompe l'oeil. De plus ce parcours nous fait découvrir le paysage et la nature.

Adeline



Quand la forme se noie, se confond à la nature, le corps sort éprouvé mais l'esprit nourrit

Simon

Il vilaggio ci accompie con il suo vestito migliore. sembra in festa, il mercato con i suoi sapori e i suoi odori accompagna la nostra visita. mi ricordo can lis, che come question villggio si rivela piano piano, la monumentalità e la pietra mi ricordano la casa del maestro utzon.

Lorenzo

Boltanski's Animitas installation, being replicated in some of the most various of the landscapes such as a chilean desert or the Dead Sea somewhat adds importance to the landscape, at the same time encouraging meditation through the delicate sound of the bells. The installation accentuates the already existing aura of the landscape.

Veronica Giurcaneanu



## PARTICIPANTS :

Gaultier ARNOULD • B •	1 • 45
Gaia DELLEA • CH •	34 • 40 • 41 • 59
Adeline DISCART • B •	41 • 63
Walzer GIADA • CH •	12 • 13 • 18 • 39 • 43 • 52 • 57 • 65 • 68 • 77 • 84
Lorenzo GIORDANO • CH •	31 • 63
Veronica Maria GIURCANEANU • CH •	4 • 7 • 11 • 19 • 22 • 37 • 48 • 49 • 71 • 85
Roumaissae HAMDOUNI • B •	61 • 63
Maxence JOURDAT • B •	9 • 33 • 58 • 65
Lou-Elise MAURICE • B •	19 • 28 • 31 • 52 • 61
Anthony MICHALIK • B •	6 • 7 • 23 • 27 • 53 • 59 • 67 • 69
Simon MICHIELS • B •	36 • 54
Michele PANI • CH •	43 • 61
Paolo CANEVASCINI • CH •	5 • 15 • 17 • 21 • 29 • 39 • 56 • 73
Mariette DORTHU • B •	13 • 26 • 30 • 35 • 47 • 50 • 60
Annick GUELDRE • B •	16 • 72 • 73
Didier LIEGEOIS • B •	8 • 10 • 11 • 14 • 20 • 24 • 32 • 42 • 44 • 46 • 51 • 62 • 64 • 66 • 70 • 74 • 76
Michel PIERRE • B •	35 • 57 • 75





Géométrie  
Partage  
Famiglia  
Condivisione  
Typology  
misura  
Happiness  
Isolement  
Découverte  
Liberté  
Partage  
Serenite  
Passage  
Passion  
Opportunità  
Sintesi  
21009191944

Faculté d'Architecture Université de Liège

Site Outremeuse  
Bd de la Constitution, 41  
B 4020 Liège

Site du Jardin-Botanique  
Rue Courtois, 1  
B 4000 Liège

[www.archi.uliege.be](http://www.archi.uliege.be)

Accademia di architettura  
Università della Svizzera italiana

largo Bernasconi 2  
CH 6850 Mendrisio  
Svizzera

[www.arc.usi.ch](http://www.arc.usi.ch)



THANKS :

• Christian Bourdais      [www.solo-houses.com](http://www.solo-houses.com)



• Moleskine      [www.moleskine.com](http://www.moleskine.com)

MOLESKINE

• Engie      [www.engie.com](http://www.engie.com)



• OPTO-Bi      [www.opto-bi.be](http://www.opto-bi.be)

OPTO-**Bi**  
LIFESTYLE**DESIGN**

Responsible workshop : Mariette Dorthu  
[mariette.dorthu@uliege.be](mailto:mariette.dorthu@uliege.be)  
september 2019

